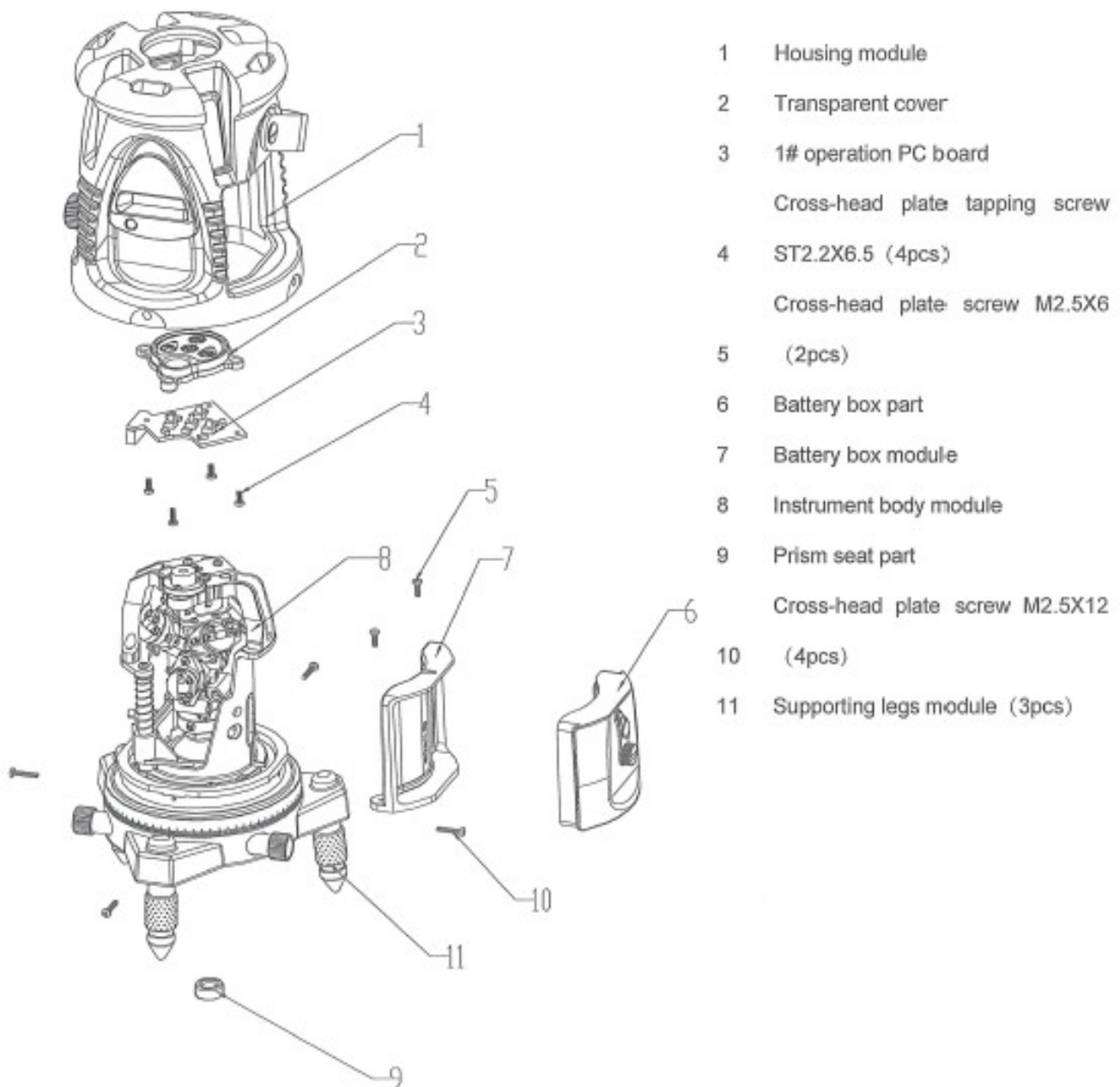


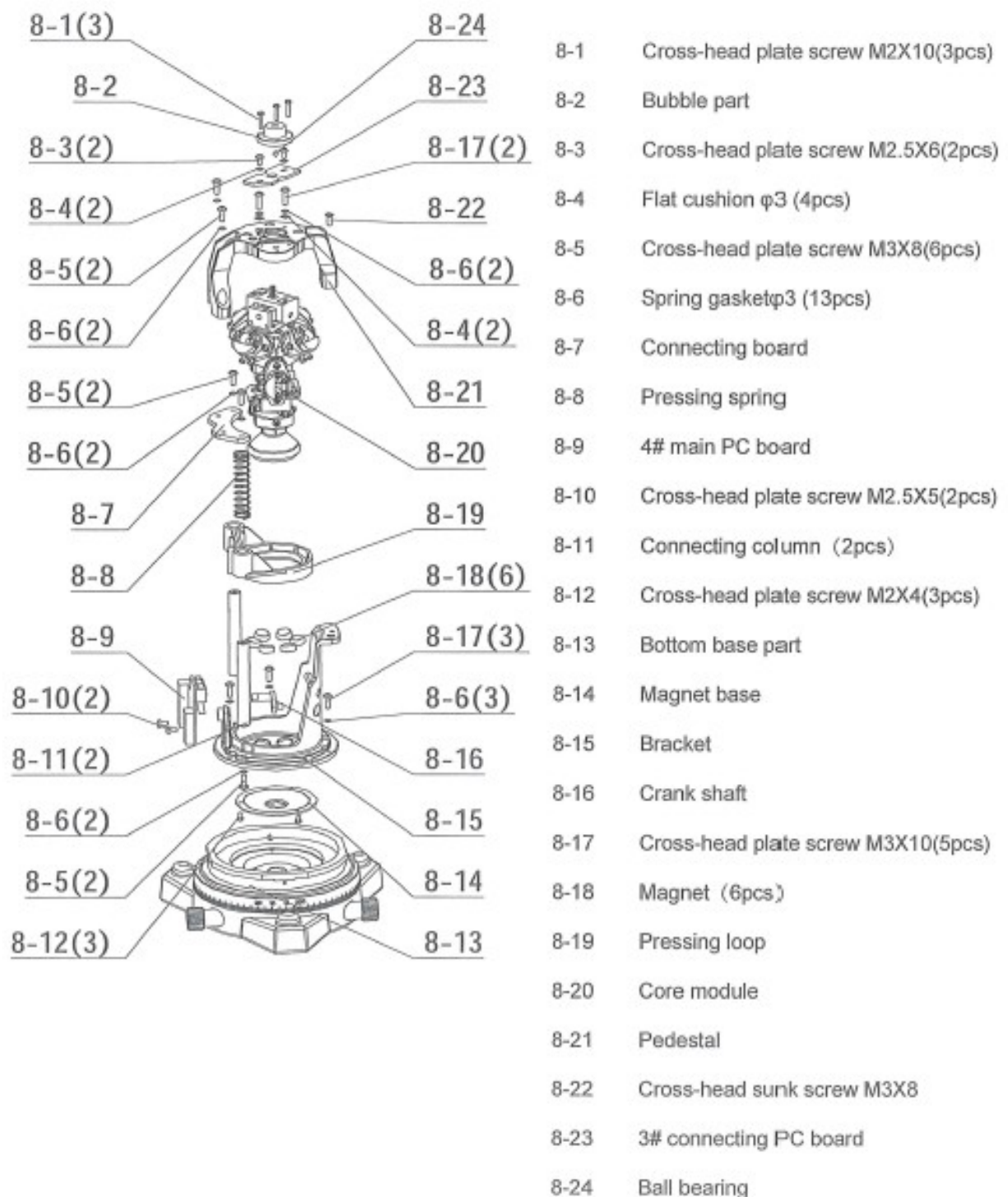
PROLASER 895

Exploded View (Page 1 of 5)



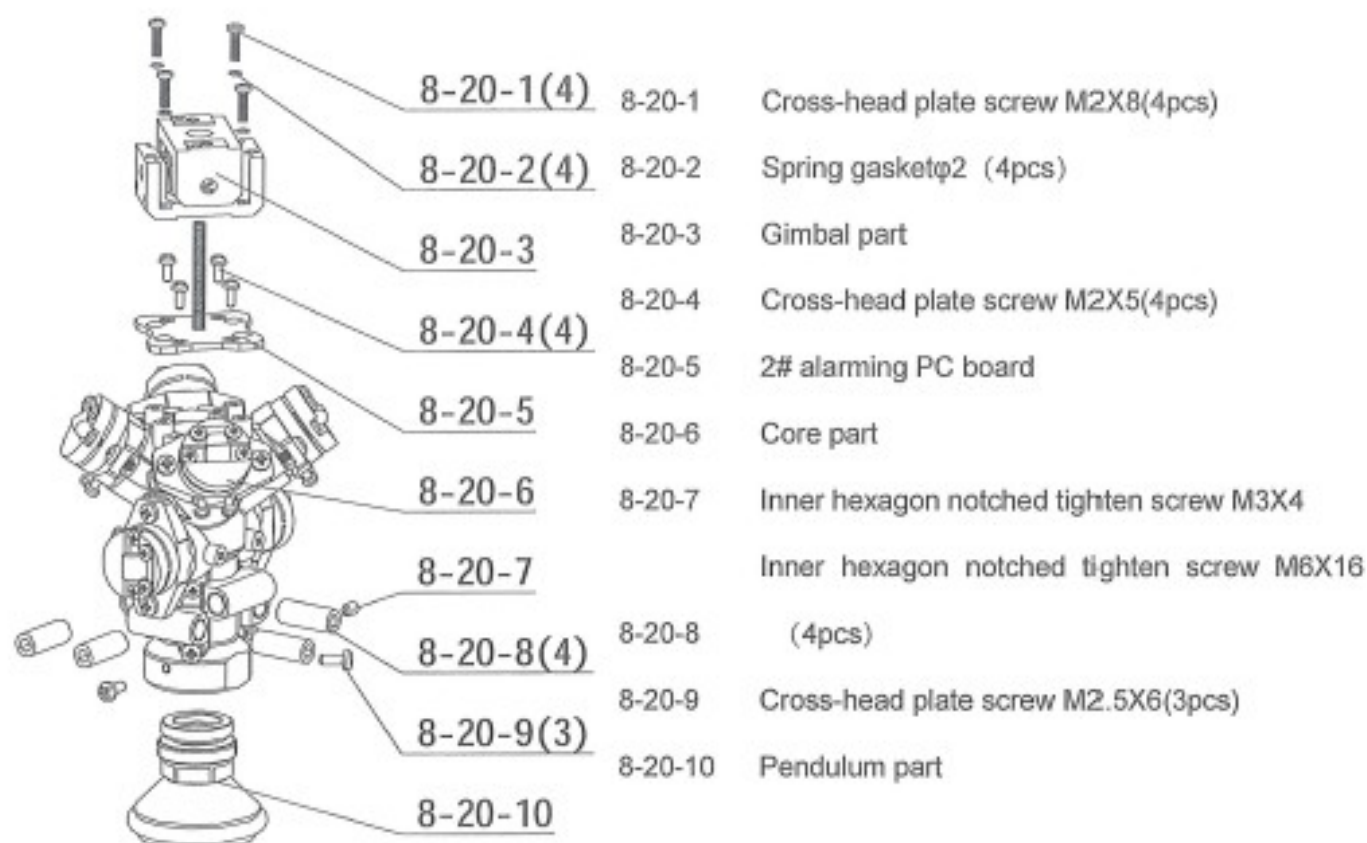
Exploded View (Page 2 of 5))

Disassembly of instrument body module (8)



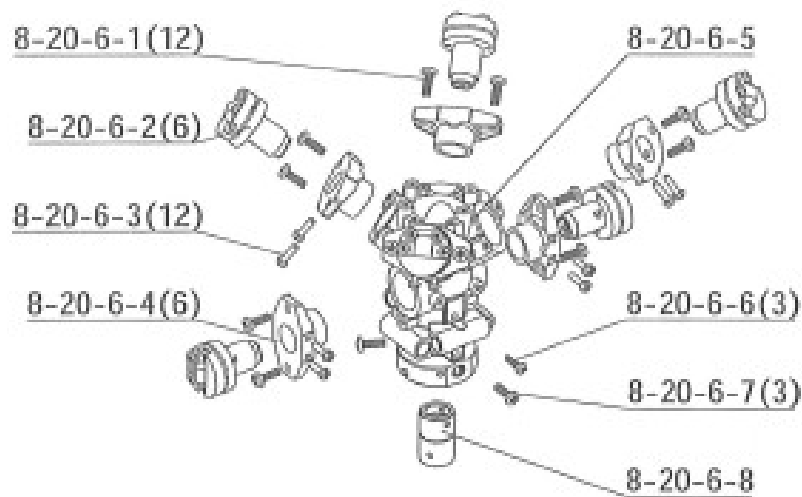
Exploded View (Page 3 of 5)

Disassembly of core module (8-20)



Exploded View (Page 4 of 5)

Disassembly of core part (8-20-6)

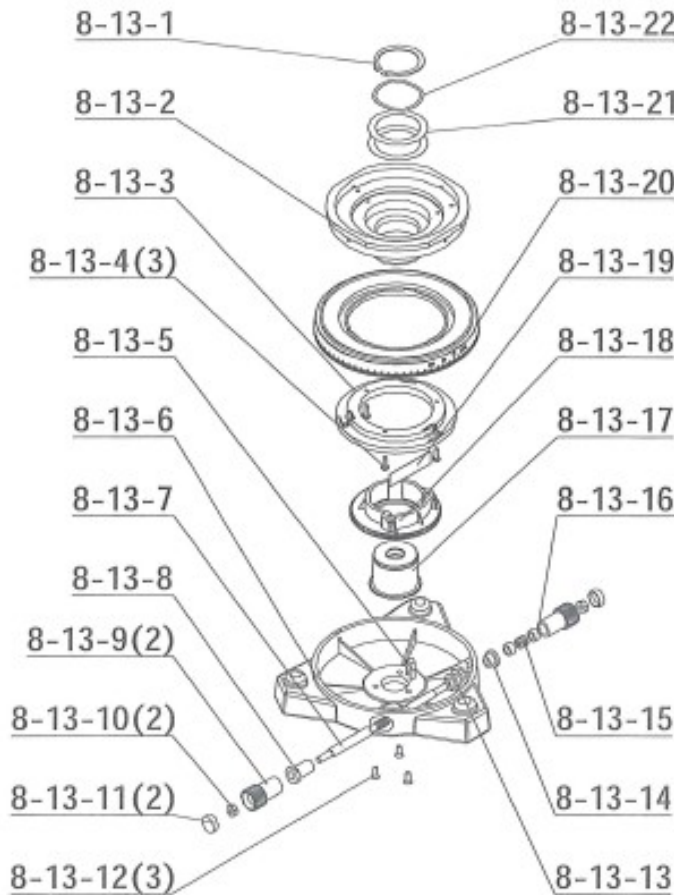


8-20-6-1	Cross-head plate screw M2.5X10 (12pcs)
8-20-6-2	Laser module (6pcs)
8-20-6-3	Special screw 2 (12pcs)
8-20-6-4	Adjusting seat
8-20-6-5	Instrument body
8-20-6-6	Cross-head plate screw M2X8 (3pcs)
8-20-6-7	Cross-head plate screw M2.5X8 (3pcs)
8-20-6-8	Plumb down laser source module

Exploded View (Page 5 of 5)

Disassembly of base part

(8-13)



- 8-13-1 Block ring for the shaft $\phi 30$
- 8-13-2 Base board
- 8-13-3 Retainer ring
- 8-13-4 Cross-head plate screw M2.5X8 (3pcs)
- 8-13-5 Spring piece
- 8-13-6 Bottom base
- 8-13-7 Worm
- 8-13-8 Sleeve
- 8-13-9 Knob (2pcs)
- 8-13-10 Nut M4 (2pcs)
- 8-13-11 Cover (2pcs)
- 8-13-12 Cross-head sunk screw M3X8 (3pcs)
- 8-13-13 Sleeve
- 8-13-14 Sleeve
- 8-13-15 Pressing spring
- 8-13-16 Gasket (2pcs)
- 8-13-17 Bottom base axis
- 8-13-18 Gear
- 8-13-19 Spring piece
- 8-13-20 Graduation circle
- 8-13-21 Cushion (2pcs)
- 8-13-22 Wave shaped gasket